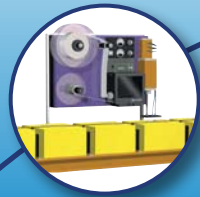
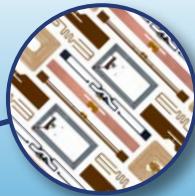


# M84Se RFID Series

*Read, Write, Verify & Print Smart Labels and Tags*



Designed for  
Print/Apply Systems



Multi-Protocol RFID  
Capability



RFID Counters



XML Enabled



## Streamlined Features

- RFID Enabled
- Plug-In Interfaces
- Fast, Accurate & Cost-Effective
- Built to the Highest Quality
- High Speed Throughput
- Auto-Calibration for New Inlay Styles
- "Print-Write-Print" for Out-of-Spec Tags

## Industry Verticals

- Aerospace
- Automotive
- Distribution
- Manufacturing
- Logistics
- Government
- Health Care
- Transportation
- Pharmaceutical

## Industry Applications

- Compliance Labeling
- Warehouse Logistics
- Pallet Tracking
- Retail Labeling
- Product Authentication
- Cross-Docking
- Shipping Labels
- Closed-Loop Tracking

# General Specifications

## M84Se RFID Series

PRINTER MODEL		M8459Se	M8460Se	M8465Se	M8485Se	M8490Se
<b>PRINT SPECIFICATIONS</b>						
Print Method		Direct Thermal		Direct Thermal/Thermal Transfer		
Print Resolution		203 dpi (8 dots/mm)		305 dpi (12 dpmm)	203 dpi (8 dpmm)	305 dpi (12 dpmm)
Max. Print Speed		5"/s (125mm/s)	8"/s (250mm/s)	8"/s (250mm/s)	12"/s (300mm/s)	8"/s (250mm/s)
Max. Print Area	Width	4.4" (112mm)	6" (152mm)		5" (128mm)	4.4" (112mm)
	Length	49.2" (1249mm)		32.8" (833mm)	49.2" (1249mm)	32.8" (833mm)
<b>MEDIA SPECIFICATIONS</b>						
Sensor Type		Transmissive sensor for die cut labels & tags. Reflective sensor for use with preprinted sensing marks. Automatic, programmable setting of top form.				
Media Type		Die cut labels, plain paper facestock and synthetics. Maximum unwind torque: 8 ft./lbs.				
Back Feed		Adjustable, ± 10" (255mm)				
Media Size	Width	Max. 5.27" (134mm) Min. 1" (25mm)	Max. 6.5" (165mm) Min. 2" (53mm)		Max. 5.27" (134mm) Min. 1" (25mm)	
	Length	Min. 0.24" (6mm) - Minimum label length at print speeds greater than 6 ips is 1 inch Min. 4" (102mm) with RFID Tag				
	Thickness	0.002" – 0.0106" (0.06 mm – 0.268 mm)				
Ribbon		NA	Max. 6.5" (165mm) W x 1968' (600m) L Min. 2.1" (53mm) W, Face-In Wind		Max. 5.25" (133mm) W x 1968' (600m) L Min. 1.6" (39.5mm) W, Face-In Wind	
<b>FONT / SYMBOLOGIES</b>						
RFID Formats		<b>UHF (Ultra-High Frequency) EPC Class 1; EPC Class 1, Gen 2; EPC Class 0/0+</b>				
Font		Bitmap - 12 proportional, mono-spaced and outline fonts (Code table 858). Internal CG Triumvirate & CG Times fonts scalable from 2 to 99 points. Optional downloaded TrueType fonts.				
Barcode Symbologies	Linear	UPC-A/E, EAN-8, EAN-13, Code 39, Code 93, Code 128, Codabar, MSI, Bookland, Industrial 2/5, Interleaved 2/5, Matrix 2/5, Postnet™, GS1-128, GS1-DataBar™, Intelligent Mail® Barcode (IMB)				
	2-D	PDF417, Micro PDF417, Truncated PDF417, Maxicode™, Data Matrix, QR Code, Composite Symbology				
<b>COMMUNICATION INTERFACE</b>						
Interfaces		RS232 Serial (up to 57.6k bps), IEEE1284 Parallel (ECP), 10/100BaseT/TX Ethernet (Wired), Wireless (802.11g), USB, RS422/485				
External Connector		Ext. (Applicator I/F): 14-pin Amp				
<b>MEMORY</b>						
Memory		16 MB Standard RAM, 2 MB Standard Flash, Optional 1 MB PCMCIA, Optional 6 MB Flash (Total)				
<b>OPERATING CHARACTERISTICS</b>						
Power Requirements		115V/220V (± 10%), 50/60 Hz (± 1%) - Auto-switching				
Dimensions		9.7" W (245mm) 16.4" D (417mm) 11.8" H (300 mm)	9.7" W x 17.8" D x 11.8" H (245mm W x 452mm D x 300mm H)		9.7" W x 16.4" D x 11.8" H (245mm W x 417mm D x 300mm H)	
Weight		25 lbs. (11.34 kg)	27.5 lbs. (12.5 kg)		25 lbs. (11.34 kg)	
Agency Certifications		CE, UL, CSA, TÜV, FCC Class A				
<b>OTHER FEATURES</b>						
Standard Real Time Clock, Optional Opposite Hand Model						

Brand or product names are trademarks and registered of their respective companies.

### SATO America, Inc.

10350-A Nations Ford Road, Charlotte, NC 28273  
Phone: (704) 644-1650 Fax: (704) 644-1662  
E-mail: satosales@satoamerica.com